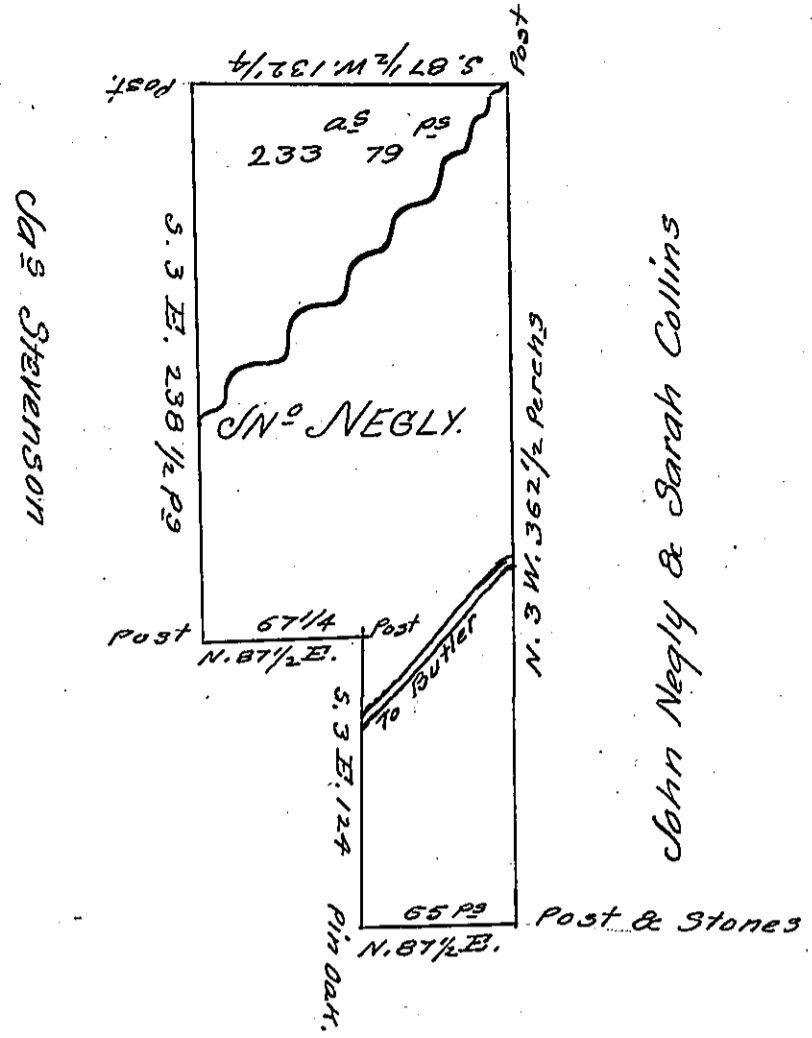


Wm Ayre Esq.



Mary Fulton & Jas Negly

Draft of a tract-land situate on the waters of Connequinessing -
 Butler township Butler County, containing two hundred thirty three
 acre- Seventy nine perch's and the allowance &c. Surveyed the 7th day of
 February 1824 at the instance of JN. Negly, on Settlement and improve-
 -ment.

Wm Purviance D.S.

I do certify that the above is a true copy of the Record in the Survey
 book of my predecessor in office. Dec^r 10th 1824.

Hugh Conway D.S.

To Gabriel Hiester
 Surveyor Gen^l.

IN TESTIMONY that the above is a copy of the original remaining on file in
 the Department of Internal Affairs of Pennsylvania, made
 conformably to an Act of Assembly approved the 16th day of
 February, 1833, I have hereunto set my Hand and caused
 the Seal of said Department to be affixed at Harrisburg,
 this seventeenth day of April 1906

Loac D. Brown
 Secretary of Internal Affairs.